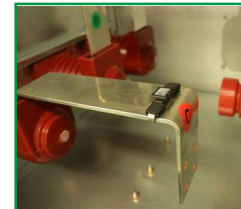
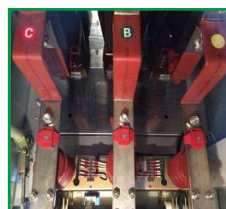
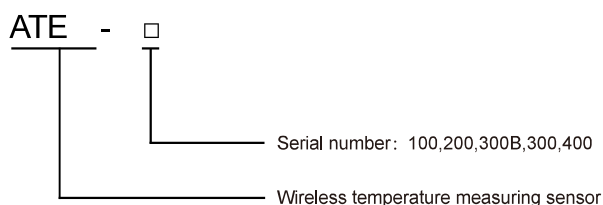


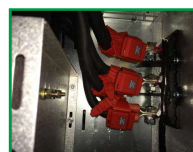
# ATE Series Wireless Temperature Sensor

## Model Description



## Functions

Functions	ATE100	ATE200	ATE300B	ATE300	ATE400
Wireless frequency	2.4GHz		470MHz		
Transmission distance	10m (open area)		150m(open area)		
Sampling frequency	25s		15s		
Transmission frequency	4min		4min	15s	
Installation	Bolted	Belt	Bolted	Tied with cable tie	
Power supply	Battery		CT-powered, I≥5A		
Service life	≥5years		≥10years		
Temperature range	-40℃~+125℃		-10℃~+125℃	-50℃~125℃	
Accuracy	±2℃				
Sensor probe	Alloy chip fixing		Isolated	Alloy chip fixing	
Application	Between bus bar and cable joints	Bus bar, cable joints and moving contact	Bus bar, cable joints and fixed contact		
Environment temperature	-40℃~+125℃				
Environment humidity	≤95%				
Atmospheric pressure	86kPa~106kPa				



## Dimensions

Sensor	Dimensions
 <p>ATE100</p>	
 <p>ATE200</p>	
 <p>ATE300B</p>	
 <p>ATE300</p>	
 <p>ATE400</p>	

## Installation

