

# Renting Machine Online Energy Monitoring Solution

IoT based, Online APP/WEB Energy Monitoring, 4G Network, 1-phase&3-phase

Author: Loki Elfin

E-mail: [loki@acrel.cn](mailto:loki@acrel.cn)

<https://www.acrel-electric.fr/>



## 0. Scenario Preset

- (1) There are 10 renting machines which are far from each other or are impossible for RS485 wiring.
- (2) Each machine was powered by 1 main circuit 3-phase that needed to be monitored online.
- (3) Each circuit are with **rated voltage of 3x400Vac L-L&3x230Vac L-N**, and with **rated current of 150A AC**. All machines are using the typical **3P3W [3-phase 3-wire]** power system.
- (4) Circuits' current are carried by **cable**, of which the size was suitable for **24mm aperture** (diameter).
- (5) For each machine's 3-phase monitoring circuit, we will install 1\* ADW300-4GHW/C Wireless 4G 3-phase Energy Meter paired with 2\* AKH-0.66/K K- 24 150/5 for current input.

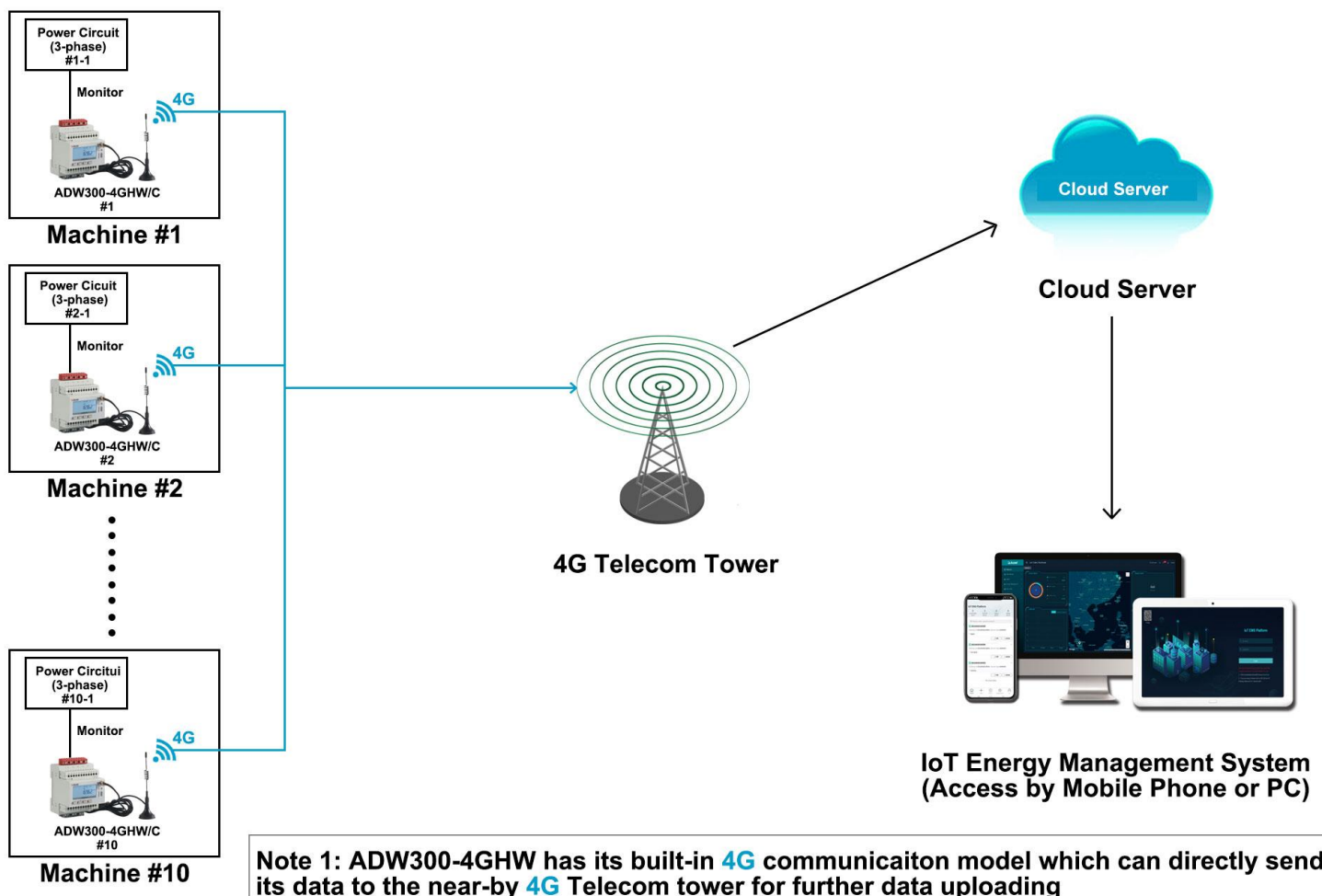
## 1. Devices Deployment Plan

### Machine #1 - Power Circuit #1-1:

- 1\* ADW300-4GHW/C Wireless 4G Energy Meter [For monitoring the power circuit of Machine #1]
- 2\* AKH-0.66/K K- 24 150/5 Split-core Current Transformer [paired with energy meter for current input]

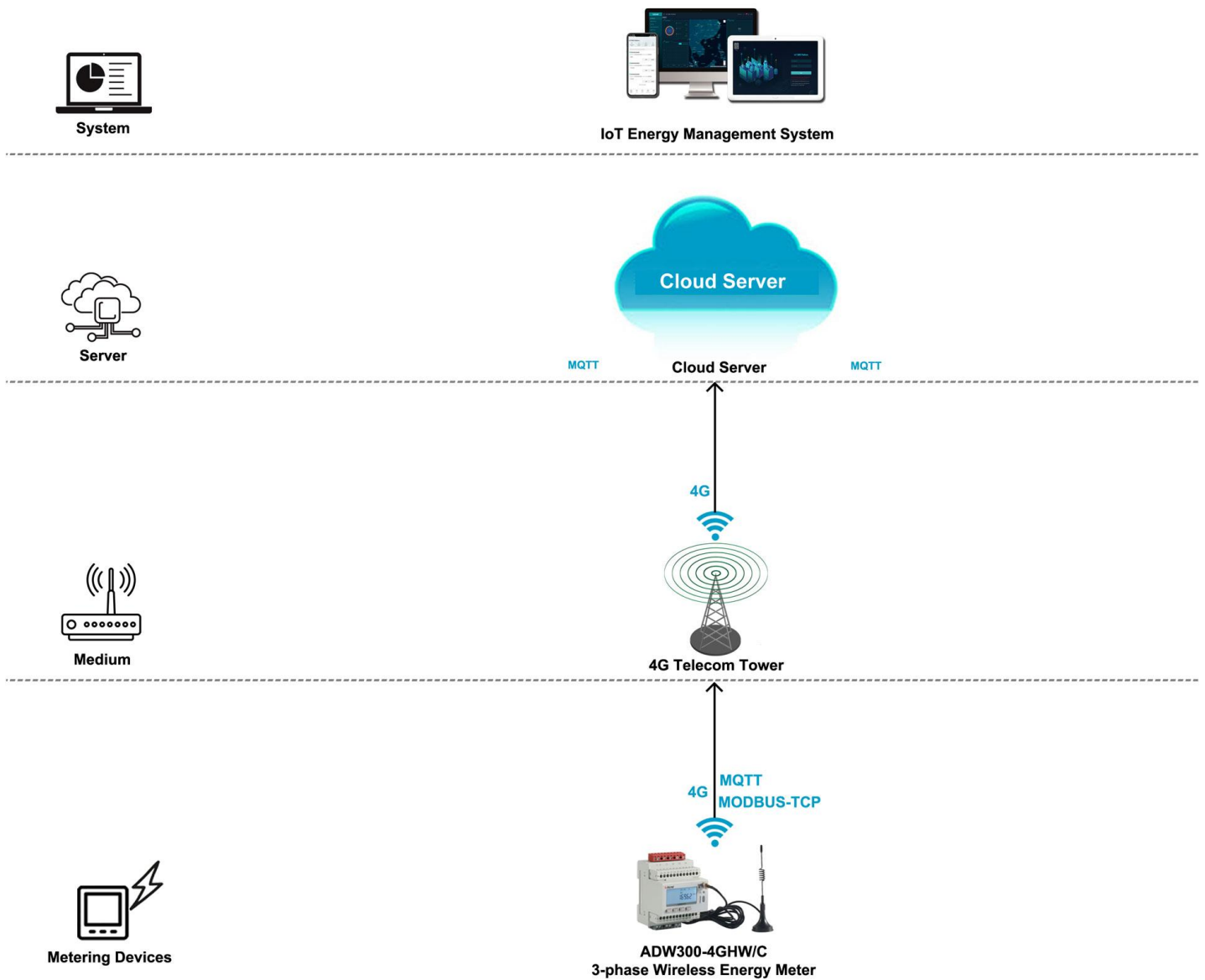
### Machine #10 - Power Circuit #10-1:

- 1\* ADW300-4GHW/C Wireless 4G Energy Meter [For monitoring the power circuit of Machine #10]
- 2\* AKH-0.66/K K- 24 150/5 Split-core Current Transformer [paired with energy meter for current input]



## 2. Communication Structure&Logic

- (1) 4G Communication could be served as one of the final data upstream methods by sending the data to cloud server deployed in Internet so that Acrel IoT System could be interact with these data collected by bottom metering devices like Energy Meter
- (2) ADW300-4GHW/C Wireless 4G 3-phase Energy Meter has a built-in 4G communication module which allow it to directly send data to local 4G telecom tower through 4G signal based on MQTT and MODBUS-TCP protocol without using a extra 4G IoT Gateway.
- (3) Each ADW300-4GHW/C has a 4G card tray for installing the 4G sim card which could be bought from your local 4G service provider.
- (4) ADW300-4GHW/C also have a RS485 communication normally used for devices adjustment with Acrel ADW300 adjustment software.



### 3. Hardware Devices Overview [Energy Meter & Paired CTs]

#### Model 1: ADW300-4GHW/C 4G 3-phase IoT Energy Meter

- Monitoring: Up to 1 circuits 3-phase [AC Metering]
- Wireless Comms.: 4G LTE [MQTT, MODBUS Protocol]
- Wired Comms.: RS485 [MODBUS-RTU Protocol]
- Rated Current: 3x1(6)A AC [via -/5A CTs.]
- Rated Voltage: Up to 3x660Vac L-L
- Certificate&Standard: CE, CE-RED
- More Introduction: [https://www.acrel-electric.fr/product/adw300\\_iot\\_wireless\\_smart\\_energy\\_meter](https://www.acrel-electric.fr/product/adw300_iot_wireless_smart_energy_meter)



3-phase  
IoT APP/WEB

Multi-Function  
4G/WiFi/LoRa

#### Model 2: AKH-0.66/K K- 24 150/5 Split-core Current Transformer

- Current Ratio: 150A/5A
- Primary Current: 150A
- Secondary Current: 5A
- Accuracy: Class 0.5 or 1.0
- Certificate&Standard: CE
- More Introduction: [https://www.acrel-electric.fr/product/split\\_core\\_current\\_transformer\\_akh\\_0\\_66\\_k\\_24](https://www.acrel-electric.fr/product/split_core_current_transformer_akh_0_66_k_24)


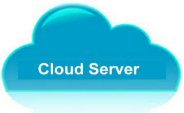




AC  
Split Core

60~400A  
Class 0.5

#### 4. Overall Model Selection&Quotation

(1) This Quotation doesn't include freight charge. To gain a complete quotation, please refer the actual quantity that you want to request for the actual order, once we receiving it. We will issue a Official Proforma Invoice with Acrel Stamps on it for later procedure.

<b>System Software</b>					
Name	Description	System Price	Remark (Choose Host Service or Buy-out Service after 3-month Free Trial of <b>Cloud IoT System</b> )		
 <b>Acrel Cloud IoT Energy Management System</b>	1.System support all the meters across the country whose data has been sent to cloud server through <b>4G,WIFI or Ethernet</b> . 2.Remote meter reading and data collection. 3.Provide <b>IoT APP</b> for <b>mobile phone</b> side and <b>IoT WEB</b> for <b>PC</b> side. 4.Generate energy data report of daily, monthly and annually period with year-on-yeay and period-on-period energy analysis. 5.Provide various alarm function to ensure a stable operation of the system and protect your property. 6.Offer 3-month free trial of system with full technical support as for a test phase or pilot project.	\$0 (recommended in pilot project)	3-month Free Trail (Users don't need to rent a cloud server))		
		\$140/Year (For 10 Points) (Price for Host Service Only, recommended in pilot project)	\$14 to buy Hosting Service for 1 monitoring points connected to the system 1 year (Users don't need to rent a cloud server)		
		\$8000/Permanent (Limitless Points) (Price for Buy-out Service Only,recommended in late project)	1-time charging of \$8000 for Buy-out Service of permanent use (Support OEM and a cloud server need to be rent by users)		
<b>Cloud Server</b>					
Name	Description	Server Renting Price (For Reference Only)	Remark		
 <b>Cloud Server</b>	1.Cloud Server could be rent on the cloud server provider like Amazon Cloud. 2.Users of <b>Cloud IoT Energy Management System</b> only need to rent cloud server when they choose <b>buy-out</b> service of our <b>Cloud IoT System</b> . And if they are using <b>hosting service</b> or <b>3-month free trial</b> of our <b>Cloud IoT System</b> , we will use our own cloud server which has been rent on Amazon so that users don't need to rent a cloud server. 3.The quotation of Cloud Server is only a reference price that we have rent on Amazon Cloud.	According to Specs of Rented Cloud Server	Below cloud server specs could support 1000~2000 monitoings points connected to the system (Server: 8 core 16G Operation System: windows server 2016)		
<b>4G Wireless Energy Meter</b>					
Overview Picture	USAGE&MODULE NAME	DESCRIPTION & SPECIFICATION	QUANTITY	FOB UNIT PRICE (USD)	AMOUNT (USD)
	3-phase 4G Wireless Energy Meter <b>ADW300-4GHW/C</b>	<b>Communication:</b> 4G Wireless Communication (with 4G SIM card)&RS485 (MODBUS-RTU) <b>Rated Voltage:</b> 3x380~456Vac L-L or 3x660Vac L-L (45~65Hz) <b>Rated Current:</b> 3x1(6)A AC (via CTs) <b>Auxiliary Power Supply:</b> 85~265Vac	10 pcs	/	/
<b>Paired Split-core CT</b>					
Overview Picture	USAGE&MODULE NAME	DESCRIPTION & SPECIFICATION	QUANTITY	FOB UNIT PRICE (USD)	AMOUNT (USD)
	Split-core Current Trasnformer <b>AKH-0.66/K K-φ24</b>	<b>Current Ratio:</b> 150A/5A AC <b>Aperture:</b> φ24mm (diameter) <b>Accuracy:</b> Class 1.0	20 pcs	/	/

## 6. Acrel IoT Energy Monitoring System (Partail Introduction)

Acrel IoT Energy Monitoring System could be access in 2 different ways:

(1) Access through WEB on your computer.

Access port: <https://iot.acrel-eem.com/>

(2) Access through APP on your mobile phone

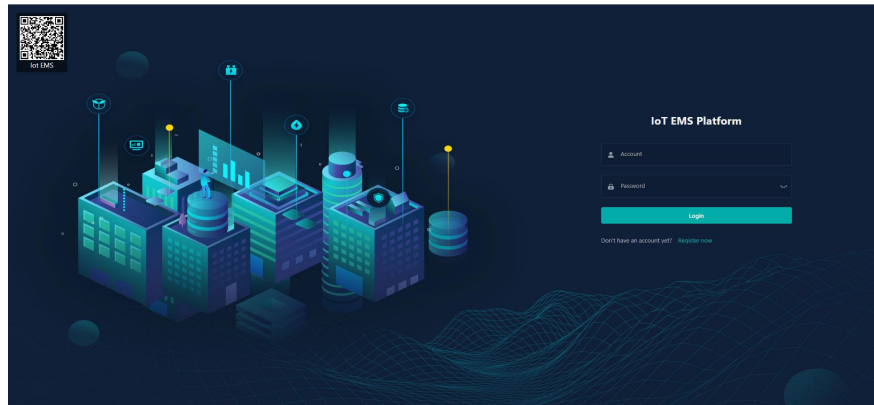
Download Link: <https://play.google.com/store/apps/details?id=com.acrel.iotems>

(1) WEB Accesss (Computer):

Access Port: <https://iot.acrel-eem.com/>

Test Account Name: acrel

Test Account Password: 123456

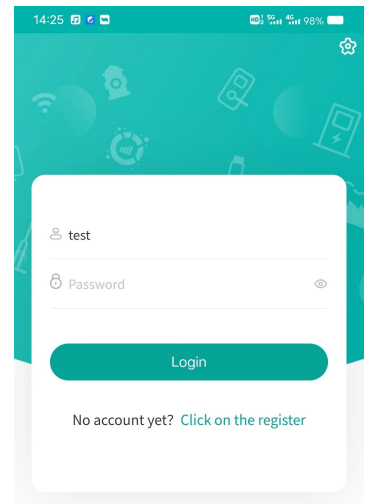
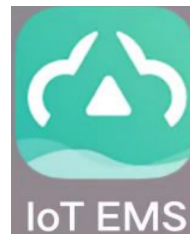


(2) APP Accesss (Mobile):

Download Link: <https://play.google.com/store/apps/details?id=com.acrel.iotems>

Test Account Name: acrel

Test Account Password: 123456

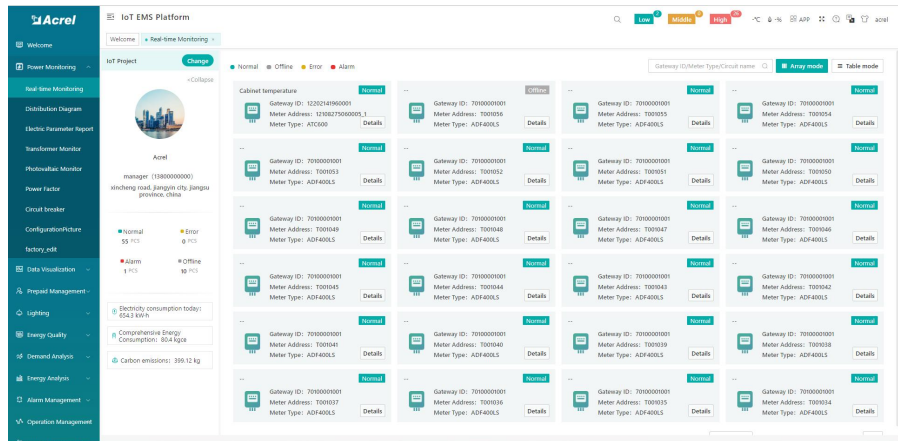


## 6. Acrel IoT Energy Monitoring System (Partail Introduction)

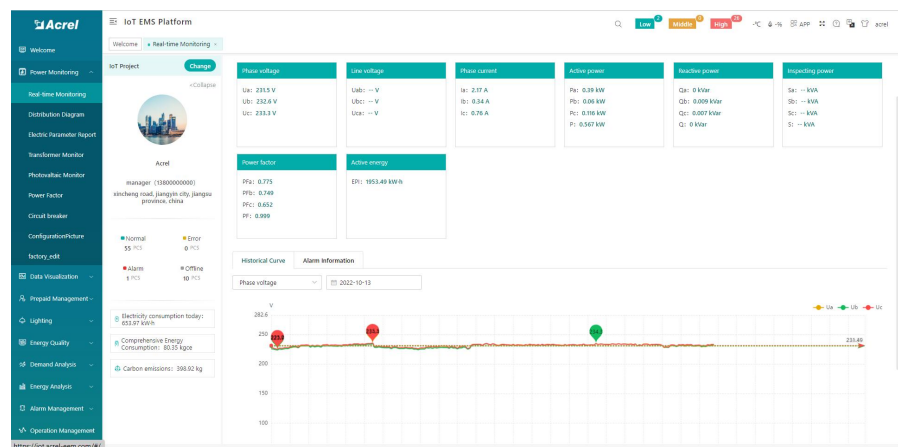
Main Function of WEB side System:

- (1) Devices List (2) History Curve (3) Electricity Parameters Report (4) Energy Consumption Report (Daily, Monthly, Yearly) (5) User Report

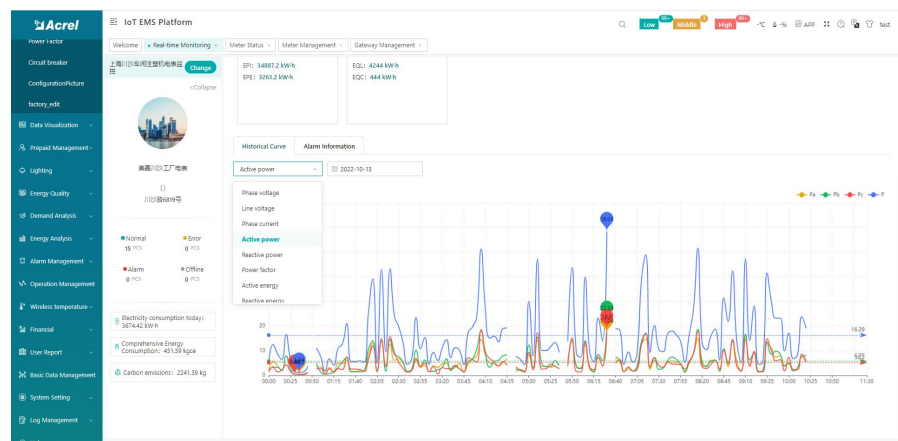
(1) Devices List: Showing the overall devices connected to Acrel System and were bond to certain project. SN code, Online-Offline status, devices model and other necessary information will be shown here.



(2) History Curve: Showing the daily history data curve of all the data that could be collected and upload by energy meter or other basic metering devices.



(2) History Curve: By selecting the items of "data" and "electricity parameter", platform can show the history curve of different data and date.

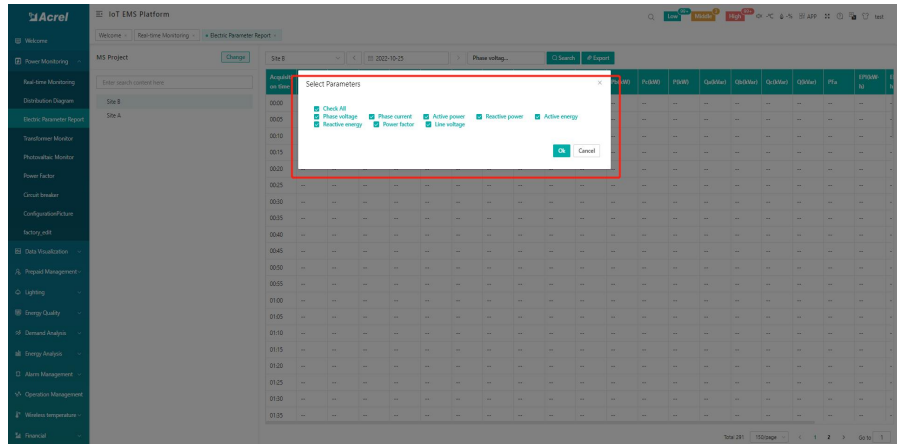


### 6. Acrel IoT Energy Monitoring System (Partail Introduction)

Main Function of WEB side System:

- (1) Devices List (2) History Curve (3) Electricity Parameters Report (4) Energy Consumption Report (Daily, Monthly, Yearly) (5) User Report

(3) Electricity Parameters Report:  
Select the "electricity parameters" that you want to show in this report



(3) Electricity Parameters Report: All the electricity parameters that could be collected by certain energy meter will showed as a report here.

Time	Pu3W	Pu3W	Pc3W	PR3W	Qs3W	Qr3W	Qc3W	Qr3W	Sc3W	Sr3W	Ss3W	Sr3W	Pf3	Pf3	Pf3	Pf3	EP3W
11:04	9	8.82	28.86	-9.34	-6.12	-7.2	22.86	14.58	10.92	11.46	36.96	...	...	...	...	...	139425
10:02	8.82	8.64	27.48	-7.8	-6.18	-7.02	21	13.26	10.8	11.16	35.22	...	...	...	...	...	139427
9:84	8.46	8.46	26.76	-8.34	-5.82	-6.84	21	12.9	10.26	10.86	34.02	...	...	...	...	...	139429
10:14	8.76	8.76	27.66	-7.74	-6.06	-7.02	20.82	13.2	10.68	11.28	35.16	...	...	...	...	...	139431
9:54	8.64	8.64	26.52	-8.28	-6.06	-6.6	20.84	12.6	10.56	10.86	34.02	...	...	...	...	...	139433
10:38	9.18	9.04	28.2	-7.44	-6.42	-6.9	20.76	13.5	11.22	11.1	35.82	...	...	...	...	...	139435
9:9	8.82	8.34	27.06	-8.46	-5.82	-6.84	21.42	13.08	11.84	11.46	34.62	...	...	...	...	...	139437
10:38	8.76	8.58	27.2	-8.04	-6.12	-6.9	21.06	13.08	11.04	11.04	35.04	...	...	...	...	...	139439
8:78	8.84	8.82	27.24	-7.3	-6.18	-6.9	20.58	12.9	10.82	10.86	34.8	...	...	...	...	...	139441
9:6	9.34	9.3	28.44	-8.34	-6.12	-6.12	20.58	12.72	11.4	11.64	35.76	...	...	...	...	...	139443
9:78	8.58	8.4	26.76	-8.46	-6.06	-6.9	21.42	12.96	11.52	10.82	34.8	...	...	...	...	...	139445
11:56	11.4	11.82	36.78	3.36	-4.8	-6.36	14.52	15.48	12.36	11.44	41.28	...	...	...	...	...	139451
9:66	8.4	8.52	26.58	-8.52	-5.84	-7.02	21.48	12.9	13.02	11.04	34.26	...	...	...	...	...	139453
8:42	8.28	8.34	26.04	-8.38	-5.88	-6.96	21.12	12.54	11.04	10.86	33.54	...	...	...	...	...	139455
9:36	8.16	8.28	25.8	-8.38	-5.82	-6.96	21.06	12.48	10.02	10.8	33.3	...	...	...	...	...	139457
10:02	8.22	8.22	26.46	-8.38	-5.88	-6.84	21	12.96	10.8	10.86	33.72	...	...	...	...	...	139459
8:56	8.38	8.16	26.1	-8.34	-5.94	-6.96	21.24	12.78	11.02	10.68	33.66	...	...	...	...	...	139461
10:82	8.38	8.34	27.34	-4.44	-5.94	-7.08	17.46	13.8	10.38	10.8	35.04	...	...	...	...	...	139463

(3) Electricity Parameters Report:  
Report on platform could be exported in "Excel" format to your computer for a brief storage when accessing the IoT EMS WEB platform.

Acquisition time	Ua(V)	Ub(V)	Uc(V)	Ia(A)	Ib(A)	Ic(A)	Pa(W)	Pb(W)	Pc(W)	Pt(W)	Qa(kvar)	Qb(kvar)	Qc(kvar)	Qt(kvar)	Sa(kVA)	Sb(kVA)	Sr(kVA)	Ss(kVA)	Sr(kVA)	Ss(kVA)	Pf3	Pf3	Pf3	Pf3	
20:00:00	226.8	226.8	227.4	...	...	...	...	...	...	...	...	...	...	...	...	...	...	...	...	...	...	...	...	...	...
3:00:05	225.6	225.4	227.3	...	...	...	...	...	...	...	...	...	...	...	...	...	...	...	...	...	...	...	...	...	...
4:00:10	224.2	224.2	225.8	...	...	...	...	...	...	...	...	...	...	...	...	...	...	...	...	...	...	...	...	...	...
5:00:15	223.8	224.2	225.9	...	...	...	...	...	...	...	...	...	...	...	...	...	...	...	...	...	...	...	...	...	...
6:00:20	223.4	223.6	227.1	...	...	...	...	...	...	...	...	...	...	...	...	...	...	...	...	...	...	...	...	...	...
7:00:25	224.6	224.7	226.3	...	...	...	...	...	...	...	...	...	...	...	...	...	...	...	...	...	...	...	...	...	...
8:00:30	225.3	225.7	227.3	...	...	...	...	...	...	...	...	...	...	...	...	...	...	...	...	...	...	...	...	...	...
9:00:35	226.2	227	228.6	...	...	...	...	...	...	...	...	...	...	...	...	...	...	...	...	...	...	...	...	...	...
10:00:40	225.8	226.2	227.7	...	...	...	...	...	...	...	...	...	...	...	...	...	...	...	...	...	...	...	...	...	...
11:00:50	226.7	226.9	228.6	...	...	...	...	...	...	...	...	...	...	...	...	...	...	...	...	...	...	...	...	...	...
12:00:50	228.1	228.3	229.9	...	...	...	...	...	...	...	...	...	...	...	...	...	...	...	...	...	...	...	...	...	...
13:00:55	228.3	228.8	230.4	...	...	...	...	...	...	...	...	...	...	...	...	...	...	...	...	...	...	...	...	...	...
14:01:00	228.5	228.8	230	...	...	...	...	...	...	...	...	...	...	...	...	...	...	...	...	...	...	...	...	...	...
15:01:05	227.7	229	229.3	...	...	...	...	...	...	...	...	...	...	...	...	...	...	...	...	...	...	...	...	...	...
16:01:10	230	230.2	231.8	...	...	...	...	...	...	...	...	...	...	...	...	...	...	...	...	...	...	...	...	...	...
17:01:15	230.3	231.1	232.3	...	...	...	...	...	...	...	...	...	...	...	...	...	...	...	...	...	...	...	...	...	...
18:01:20	229.8	229.8	231.9	...	...	...	...	...	...	...	...	...	...	...	...	...	...	...	...	...	...	...	...	...	...
19:01:25	230.8	231.2	232.7	...	...	...	...	...	...	...	...	...	...	...	...	...	...	...	...	...	...	...	...	...	...
20:01:30	231.4	231.2	233.1	...	...	...	...	...	...	...	...	...	...	...	...	...	...	...	...	...	...	...	...	...	...
21:01:35	229.8	229.8	231.9	...	...	...	...	...	...	...	...	...	...	...	...	...	...	...	...	...	...	...	...	...	...
22:01:40	230.6	230.3	232.3	...	...	...	...	...	...	...	...	...	...	...	...	...	...	...	...	...	...	...	...	...	...
23:01:45	229.8	229.9	231.1	...	...	...	...	...	...	...	...	...	...	...	...	...	...	...	...	...	...	...	...	...	...
24:01:50	230.1	229.6	231.9	...	...	...	...	...	...	...	...	...	...	...	...	...	...	...	...	...	...	...	...	...	...
25:01:55	230.1	230.2	232	...	...	...	...	...	...	...	...	...	...	...	...	...	...	...	...	...	...	...	...	...	...
26:02:00	229.2	228.8	230.9	...	...	...	...	...	...	...	...	...	...	...	...	...	...	...	...	...	...	...	...	...	...
27:02:05	231	230.7	232.2	...	...	...	...	...	...	...	...	...	...	...	...	...	...	...	...	...	...	...	...	...	...
28:02:10	230.7	230.4	232.6	...	...	...	...	...	...	...	...	...	...	...	...	...	...	...	...	...	...	...	...	...	...



## 6. Acrel IoT Energy Monitoring System (Partail Introduction)

Main Function of WEB side System:

- (1) Devices List (2) History Curve (3) Electricity Parameters Report (4) Energy Consumption Report (Daily, Monthly, Yearly) (5) User Report

(4) Energy Report (Daily): This Interface show the daily energy consumption report (calculated by forward active energy)

Energy Node	00:00	01:00	02:00	03:00	04:00	05:00	06:00
...	0.00	0.32	0.00	0.32	0.00	0.32	0.00
...	0.00	31.20	0.00	19.20	0.00	36.00	0.00
...	0.00	46.40	0.00	30.40	0.00	44.00	0.00
...	0.00	8.80	0.00	9.60	0.00	9.60	0.00
...	0.00	12.00	0.00	11.20	0.00	12.00	0.00
...	0.00	39.20	0.00	39.20	0.00	40.80	0.00
...	0.00	32.80	0.00	32.80	0.00	33.60	0.00
...	0.00	29.60	0.00	29.60	0.00	20.80	0.00
...	0.00	17.60	0.00	21.60	0.00	20.80	0.00
...	0.00	30.40	0.00	30.40	0.00	20.40	0.00
...	0.00	24.80	0.00	21.60	0.00	20.80	0.00
...	0.00	40.00	0.00	40.80	0.00	40.80	0.00
...	0.00	0.00	0.00	0.80	0.00	0.80	0.00
...	0.00	42.40	0.00	26.40	0.00	47.20	0.00
...	0.00	387.52	0.00	348.32	0.00	401.92	0.00

(4) Energy Report (Daily): This daily energy report could be also export to computer in "Excel" format

Energy Node	00:00	01:00	02:00	03:00	04:00	05:00	06:00
...	0.32	0.00	0.32	0.00	0.32	0.00	0.30
...	31.20	0.00	19.20	0.00	36.00	0.00	30.40
...	46.40	0.00	30.40	0.00	44.80	0.00	46.80
...	8.80	0.00	9.60	0.00	9.60	0.00	9.60
...	12.00	0.00	11.20	0.00	12.00	0.00	12.00
...	39.20	0.00	39.20	0.00	40.80	0.00	39.20
...	32.80	0.00	32.80	0.00	33.60	0.00	32.80
...	29.60	0.00	29.60	0.00	29.60	0.00	28.80
...	17.60	0.00	21.60	0.00	20.80	0.00	20.80
...	30.40	0.00	30.40	0.00	30.40	0.00	29.60
...	24.80	0.00	21.60	0.00	20.80	0.00	20.80
...	40.00	0.00	40.80	0.00	40.80	0.00	40.80
...	0.00	0.00	0.80	0.00	0.80	0.00	0.80
...	42.40	0.00	26.40	0.00	47.20	0.00	47.20
...	387.52	0.00	348.32	0.00	401.92	0.00	387.50

(4) Energy Report (Monthly & Yearly): Same as daily energy report, monthly and yearly energy report could be also checked on platform and exported in "Excel" format.

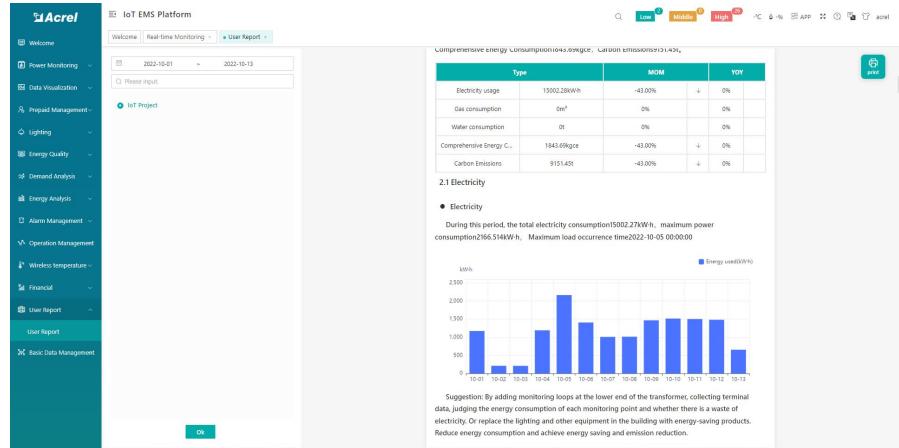
Energy Node	Day	Month	Year
...	0.00	2.76	0.00
...	0.00	2.82	0.00
...	0.00	2.81	0.00
...	0.00	2.77	0.00
...	0.00	2.76	0.00
...	0.00	2.76	0.00
...	0.00	2.82	0.00
...	0.00	2.81	0.00
...	0.00	2.77	0.00
...	0.00	2.76	0.00

## 6. Acrel IoT Energy Monitoring System (Partail Introduction)

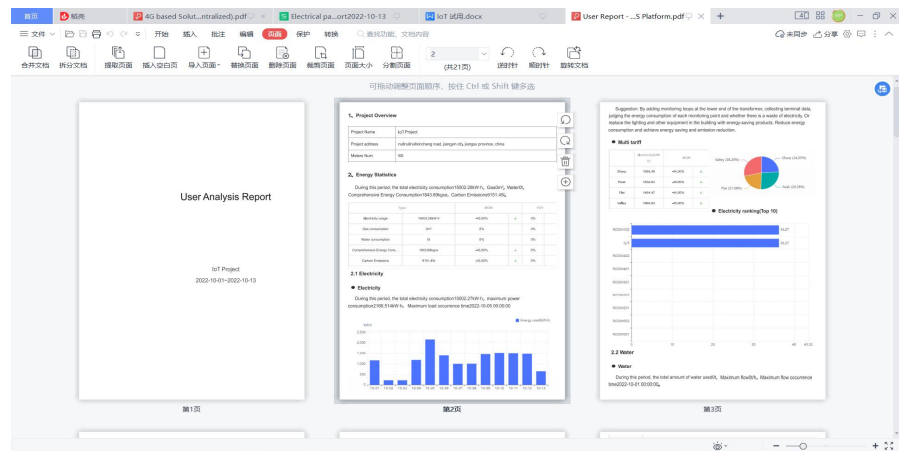
Main Function of WEB side System:

- (1) Devices List
- (2) History Curve
- (3) Electricity Parameters Report
- (4) Energy Consumption Report (Daily, Monthly, Yearly)
- (5) User Report

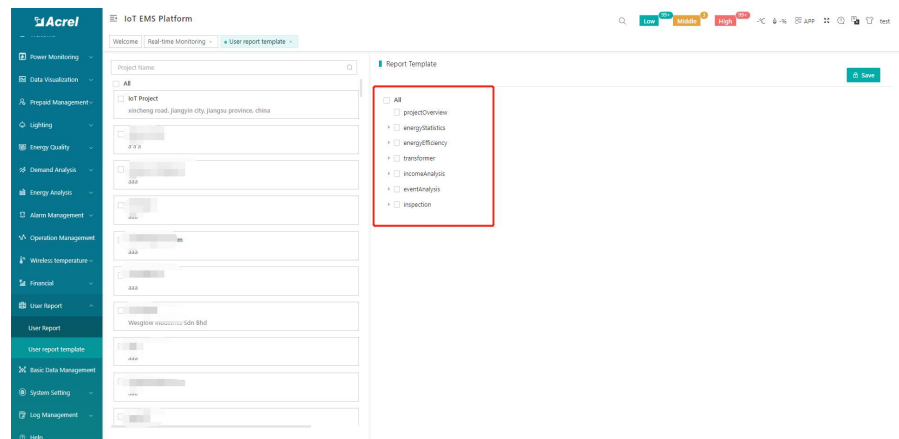
(5) User Report: A comprehensive user report including project overview, energy report, energy analysis and etc could be check on platform



(5) User Report: User report could be exported in "PDF" format into your PC for convenient check and storage.



(5) User Report: User report support template customization in buy-out service of Acrel IoT Energy Monitoring System.

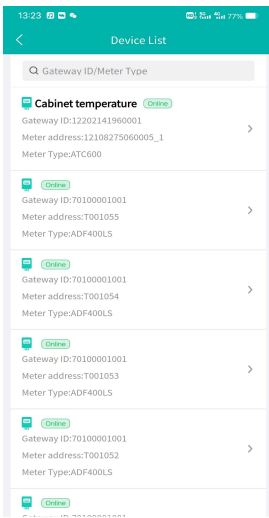


## 6. Acrel IoT Energy Monitoring System (Partail Introduction)

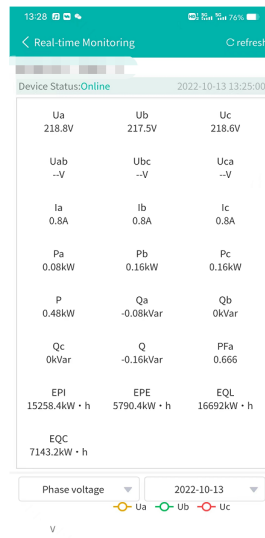
Main Function of APP side System:

(1) Devices List (2) History Curve (3) Electricity Parameters Report (4) Energy Trend (5) Energy Consumption Report (Daily, Monthly, Yearly)

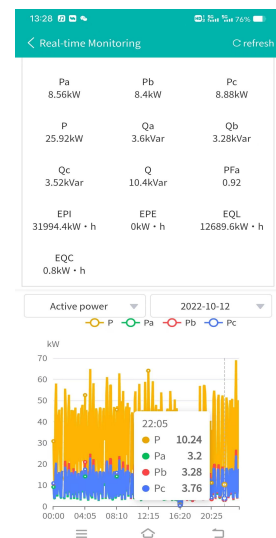
Noted: Since APP side and WEB side of Acrel IoT Energy Monitoring System share the same data, normally recommend our user to add the devices to their account using APP and check the data using WEB platform.



(1) Device List



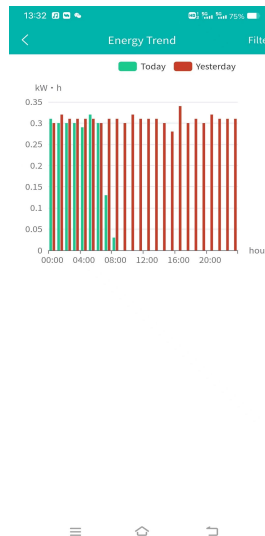
(2) History Curve



(2) History Curve

Acquisition time	Ua(V)	Ub(V)	Uc(V)
00:00	220.9	220.6	221.4
00:05	221.4	220.8	221.5
00:10	221.9	221.7	222.1
00:15	221.6	221.2	222
00:20	222	221.5	221.9
00:25	221.5	221.2	221.8
00:30	221.9	221.3	221.6
00:35	220.6	220.4	220.9
00:40	221.6	220.7	221.7
00:45	222.3	221.4	222.2
00:50	221.5	221	221.7
00:55	221.9	221.7	221.7
01:00	221.4	220.8	221.6

(3) Parameter Report



(4) Energy Trend

Circuit name	Cost(¥)	Consumption(kW·h)
Z	0.00	0.80
T	0.00	22.40
50	0.00	38.40
	0.00	17.60
	0.00	18.40
Total	0.00	97.60

(5) Energy Report